



The Power Behind the Storage

## XstreamCORE™ ET 8100T Intelligent Bridge Getting Started Guide

Thank you for purchasing the ATTO XstreamCORE ET 8100T. This guide is designed to assist you in the installation and configuration of your bridge. For more information, please visit our website at [www.atto.com](http://www.atto.com)

### Overview

This guide covers hardware, software installation, and basic setup procedures. The following equipment and software needed for the installation:

- XstreamCORE ET 8100T Intelligent Bridge
- Power cord and power brick
- Ethernet cable to attach to the management port (MP1)
- SAS LTO tape drive(s)\*
- [SAS cables](#)
- Ethernet Data Cables (LC optical or Cat 6+) depending on the 8100T model.



Note **XstreamCORE ET 8100T supports up to 4 SAS Tape drives either as standalones units (or) in a tape library.**

### Install the XstreamCORE 8100T

1. Place the XstreamCORE 8100T on a stable flat surface.
2. Record the serial number, default username, and default password located on the bottom of the unit.  
**S/N:** \_\_\_\_\_  
**Default Username:** \_\_\_\_\_  
**Default Password:** \_\_\_\_\_
3. If installing the XstreamCORE into a rack using ATTO's [FlexRack](#), please refer to the *FlexRack Installation Guide* for more information on installation.
4. Connect the Ethernet Management Port on the XstreamCORE to your ethernet network (or) local machine via ethernet.
5. Connect the Ethernet Data Port(s) on the XstreamCORE using the SFPs provided. These will either be Optical SFP+ (or) Copper RJ45, depending on the model purchased.
6. Connect the SAS LTO tape drive(s) to the SAS port on the XstreamCORE with the appropriate SAS cable. Refer to the Cabling section in the XstreamCORE *Product Installation and Operations Manual*. Power ON the tape drive(s) (or) library.
7. Plug-in the XstreamCORE to a proper AC outlet using the AC power cords and adapter provided.



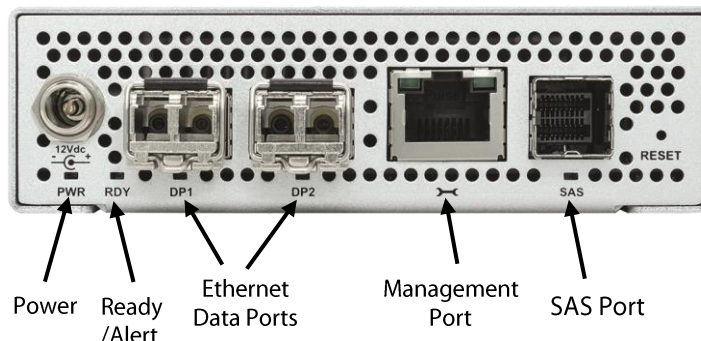
Note **Power is automatically supplied to the XstreamCORE unit when plugged into an AC outlet. The PWR LED visible on the rear panel will turn green when power is applied to the unit.**



Note **The power source must be connected to a protective earth ground and comply with local electrical codes. Improper grounding may result in an electrical shock (or) damage to the unit.**



Note **Wait for up to two minutes to allow the XstreamCORE to power up. The RDY LED visible on the rear panel will turn green, indicating that the bridge has completed its power-on self-test sequence and is ready for use.**



## Login to the XstreamCORE 8100T Web Interface

The XstreamCORE is configured initially with static IP. You may connect the management port (MP1) to a computer on the same subnet (or) directly attach to the computer.

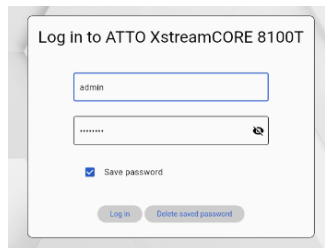


Note

**If connected directly from the management port to the computer change the IP address of the host computer port connected to the 8100T to 192.168.0.2 and subnet mask to 255.255.255.0**

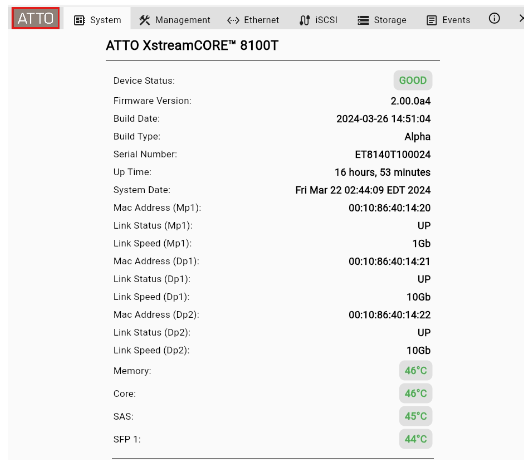
The default management port address for the 8100T is 192.168.0.1

1. Launch a supported web browser. Refer to the release notes for supported browsers.
2. Type the default IP address of the 8100T in the browser:  
**https://192.168.0.1**
3. On the login screen, enter the default username and password. You may save this password for future use.

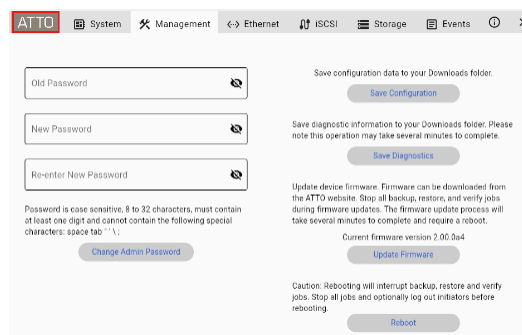


## General Information and Configuration

1. After successful login, you will be directed to the 'System' page, where general information about the 8100T will be displayed.



2. Select the 'Management' tab for permissions. You may change the default password here. Save the configuration and diagnostics information in file format by selecting the corresponding button(s) as shown in the screenshot below.





Note

**Please reference these files when contacting ATTO support for additional assistance. Once generated, they will be automatically saved to your Downloads folder.**

- Under the 'Management' tab, an option to update firmware is also provided. To download the latest firmware version, visit [www.atto.com](http://www.atto.com) (or) contact [ATTO Technical Support](#).
- Click on 'Update Firmware' and point to the location of the firmware (.zbd file).
- Once the firmware update is complete, click on 'Reboot' to enable the new firmware.
- It is recommended to wait for 2 minutes after the reboot to refresh the browser and, then re-login to the 8100T.

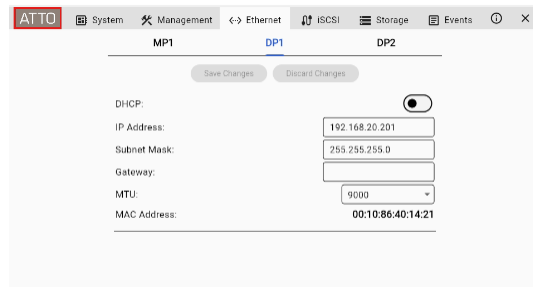
## Ethernet Configuration

- Select the 'Ethernet' tab.
- Review MP1 for management port 1, DP1 for Data Port 1, (or) DP2 for Data Port 2.
- Change the IP address, subnet mask, and gateway of the management port or the data ports, accordingly.
- You may change from static IP to DHCP, if desired. Ensure that you have access to the DHCP server in order to obtain the assigned address.
- You can change the default MTU size of the Data Port(s) from 9000 to 1500, if needed.
- Select 'Save Changes' to automatically save your changes. No reboot is required.



Note

**For optimal performance, MTU Size 9000 is recommended on the data ports.**



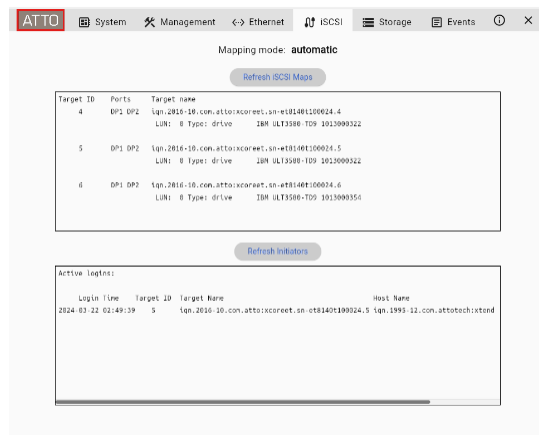
## iSCSI configuration



Note

**By default, all tape drives are mapped to all data ports. If custom mapping (or) ACL's (Access Control Lists) is preferred, please refer to the Product Installation and Operations Manual for detailed information.**

- Select the 'iSCSI' Tab.
- Displayed under this tab is a list of all the mapped iSCSI targets that you can login to from your operating system's iSCSI initiator. For more information on how to login to a target from an iSCSI initiator, please refer to the *Product Installation and Operations Manual*.
- Once the 8100T target is discovered by an initiator, the corresponding login will be displayed in the window below as shown in the screenshot.



- The XstreamCORE ET 8100T is now configured and ready for use.
- We highly recommend using [ATTO FastFrame](#) NIC's and [ATTO 360](#) Tuning, Monitoring, and Analytics Software for best-in-class Ethernet performance and user experience.