

# NetVault Backup for VMware

NetVault Backup is an enterprise backup and recovery solution that's completely integrated with VMware vStorage APIs – Data Protection.

Your ability to protect virtual machines (VMs) from disasters, media failure and data corruption is about to be greatly enhanced. With Quest NetVault Backup, you get an intuitive graphical user interface (GUI) with a single, centralized console that enables you to easily create backup and restore policies for your virtual environments.

NetVault Backup is an enterprise backup and recovery solution that's completely integrated with VMware vStorage APIs – Data Protection (VADP). It enables you to protect your entire VMware environment without the need for complex scripting or deep understanding of ESX or VADP internals.

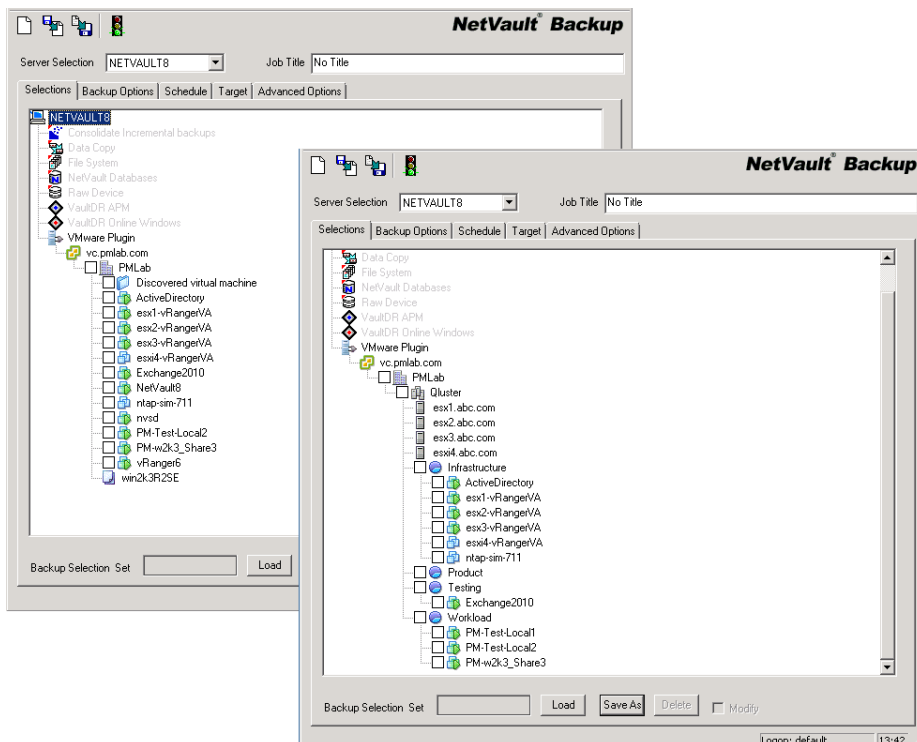
With NetVault Backup, you can minimize downtime by restoring complete VM images or individual files faster and more reliably. Through automatic integration with a wide range of backup storage devices, virtualized data can be protected and safely stored off site to meet your disaster recovery and business continuity goals.

## KEY BENEFITS

**Improve VMware ESX performance when deploying VADP** — NetVault Backup works with VADP to provide centralized backups that reduce the load on each VMware ESX server, allowing them to run more VMs and reduce backup traffic on the local area network. This approach is especially important if you need to consolidate hardware.

## BENEFITS:

- Meets VMware Ready certification
- Supports vSphere 5.5, including SAN transport
- Enables vCenter and ESX-based online backups
- Creates VSS-based snapshots for application-consistent backups
- Integrates with VADP and Change Block Tracking (CBT)
- Supports backup and restore of VMware thin provisioned disks and GUID Partition Table (GPT) formatted disks
- Enables backup and restore of VMs within a vApp
- Reduces backup windows by backing up multiple VMs in parallel
- Supports VMotion using the vSphere VM-locking API
- Performs full-image backups of VMs
- Allows full and incremental backups on Windows and Linux guests
- Offers ease of use with its point-and-click GUI
- Restores complete VM image or individual files
- Relocates individual files to an alternate directory or VM



Quest NetVault Backup is an enterprise backup and recovery solution that's completely integrated with VADP.

## SYSTEM REQUIREMENTS

### VMWARE VERSIONS

VMware vCenter

VMware ESX

VMware ESXi

### ESX SERVER PLATFORMS

VMware-supported Windows 64-bit servers

VMware-supported Linux 64-bit servers

You'll have the flexibility to protect all your VMs deployed on a VMware ESX server and to protect multiple VMware ESX servers with a single NetVault client. You can restore an entire VM or individual files from a Windows or Linux guest directly from an image-level backup stored on disk — no need for an intermediary restore.

Additionally, NetVault Backup benefits from VMotion's ability to track the deployment and migration of VMs to ensure that backups and restores are performed without requiring detailed knowledge of the location of the individual VMs.

**Increase confidence while deploying VMware** — NetVault Backup protects an individual ESX server or a full vCenter environment while empowering you to create comprehensive, flexible backup policies without the need to understand ESX or VADP internals or create complex scripting. NetVault Backup provides peace of mind because staff members can simply point and click to back up or restore VMs. It increases storage administration efficiency by consolidating VM backup management into a single environment. The solution enhances Windows protection by performing VSS-based snapshots to quiesce applications before backup.

**Ensure business continuity with automatic integration of backup devices** — Since off-site backups are an important part of any data protection plan, NetVault Backup integrates with a wide range of backup storage devices. You can ensure that your virtualized environments are protected and stored off site for disaster recovery purposes. It

also frees you from having to be available 24x7 by enabling less experienced VMware administrators to confidently initiate restores correctly and as quickly as possible, reducing downtime and improving business continuity.

**Shorten backup windows and improve device utilization** — NetVault Backup can back up multiple VMs in parallel to shrink your backup window. It also exploits Active Block Mapping (ABM) and VMware's CBT. These technologies ensure only new, changed and active blocks of data are sent over the wire, reducing the backup size and reducing the demand on your network.

What's more, NetVault Backup preserves the use of VMware's thin disk provisioning feature during VM recovery operations to control storage costs and protect data by ensuring virtual machine disks only use the amount of storage they currently need while being able to dynamically add more allocated space as required.

## ABOUT QUEST

Quest helps our customers reduce tedious administration tasks so they can focus on the innovation necessary for their businesses to grow. Quest® solutions are scalable, affordable and simple-to-use, and they deliver unmatched efficiency and productivity. Combined with Quest's invitation to the global community to be a part of its innovation, as well as our firm commitment to ensuring customer satisfaction, Quest will continue to accelerate the delivery of the most comprehensive solutions for Azure cloud management, SaaS, security, workforce mobility and data-driven insight.

## Quest

4 Polaris Way, Aliso Viejo, CA 92656 | [www.quest.com](http://www.quest.com)  
If you are located outside North America, you can find local office information on our Web site.

© 2017 Quest Software, Inc. ALL RIGHTS RESERVED. Quest, NetVault and the Quest logo are trademarks and registered trademarks of Quest Software Inc. For a complete list of Quest marks, visit [www.quest.com/legal/trademarks.aspx](http://www.quest.com/legal/trademarks.aspx). All other trademarks and registered trademarks are property of their respective owners.  
DataSheet-NVBU4VMware-US-KS-25715

Quest